

## In This Issue

President's Message.....	1
Upcoming FLCA Events.....	2
Ideas from the Front Lines.....	4
Pre-Reading Strategies.....	4
FLCA Area Representatives	
Email Addresses.....	7

*The Florida Literacy Coaches Association provides this newsletter and the information contained herein to its membership in furtherance of the Florida Literacy Coaches Association's nonprofit and tax-exempt purposes. While the Florida Literacy Coaches Association makes every effort to present accurate and reliable information the Florida Literacy Coaches Association does not endorse or certify such information, nor does it guarantee the accuracy, completeness, efficacy, or timeliness of such information. Use of such information is voluntary, and reliance on it should only be undertaken after review by qualified experts. Reference herein to any specific commercial product, process or service does not constitute or imply endorsement, recommendation, or favoring by the Florida Literacy Coaches Association.*

## President's Message

By: Beryl Rogers, FLCA President  
Menendez High School Reading Coach/teacher  
St. Johns County Public Schools

Mark your calendars for "Celebrate Literacy Week in Florida" a week-long event planned January 12-16, 2009. It's a statewide celebration promoting literacy for all ages. The Just Read! Florida office in conjunction with the Department of Education and FLCA will create a list of suggested activities for the week. Please send any suggestions you have for this week of fun and reading to Heather Henderson, Newsletter Coordinator.

FLCA will host the Second Annual FLCA Institute on Sunday, June 28, from 1:00 – 4:30 at the Marriott World Resort in Orlando. The guest speakers and breakout sessions promise to be as informative and engaging as they were last year. We are adding Coffee, Coaching and Conversation, a time to network and share great ideas with fellow coaches from around the state. Registration will open soon through the Just Read! Florida website.

I hope you have an enjoyable November and a restful Thanksgiving!

Sincerely,

*Beryl Rogers*

Beryl Rogers



## Upcoming FLCA Events

- |                            |  |
|----------------------------|--|
| January 12, 09             | Celebrate Literacy Week  |
| June 28 <sup>th</sup> , 09 | Second Annual Literacy Institute<br>Just Read! Florida conference<br>Location: TBA |

---

States: Pennsylvania &  
South Carolina

---

## By The Numbers

- |     |                          |
|-----|--------------------------|
| 559 | Current membership       |
| 61  | Districts Represented    |
| 2   | Other states represented |

## BLOGGERS WANTED

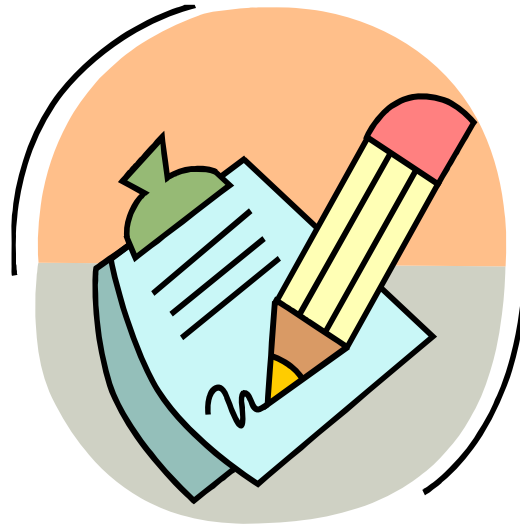
By Pamela Donehew



If you are a fellow **BLOGGER**, please send us your blog address so that we can share it with FLCA members on our website. Those of us that love to blog also love to share our blogs with others. FLCA is providing an outlet for us to share our **BLOGS** with fellow reading professionals. Even if you are a fledgling blogger, submit your blog address. There is no better way to improve your blogging than to get input from other enthusiasts. Interested bloggers can send their information to Heather Henderson, Newsletter Coordinator, [hhender@volusia.k12.fl.us](mailto:hhender@volusia.k12.fl.us)

## Don't Forget About the Petition Drive!

Go to the FLCA website (<http://floraliteracycoaches.org>) and download a petition packet TODAY. This file contains background information on the petition, instructions for gathering and submitting signatures, an "About Reading Coaches" page to explain what reading coaches do and why they need support, and a page with the support statement and lines for signatures. Support reading coaches around the state. Sign up!



## A Membership Deal to Say Thanks!

FLCA is thankful for your membership support, so we are offering a brief special. Join FLCA during the month of November and bring a friend along for FREE!!! Yes-- believe it or not---during these tough economic times we are offering a 2 for 1 membership special! Know a coach that hasn't joined? Forgot to renew your own membership? Hurry and contact your fellow literacy coaches and submit your membership applications together to Diana Triplett before November 30 and take advantage of two memberships for \$20.00. Membership fees will increase to \$20 a year--still a great bargain-- in June 2009. (Offer good for 2008-09 membership, now through November 30, 2008. Applications available on the FLCA website.)



## Ideas from the Front Lines

### Pre-Reading Strategies

By: Pat Fisher  
Literacy Coach  
Umatilla High School  
Lake County

---

In today's classroom, teachers must compete with many students' distractions: iPods and MP3 players, text messages, after school jobs, unstable family lives, peer pressures. "Turn to Chapter 3, page 76. Read to page 89, The Founding Fathers, and answer questions 2-8" may have little appeal to today's digital natives, those students to whom digital technology is as comfortable as a pair of old tennis shoes. We teachers, as digital immigrants, wonder how we can spark the attention and imagination of our 21<sup>st</sup> Century students. The question becomes, "How can we engage our students in learning?" One way may be to use one or two pre-reading strategies that can help to connect our students to active learning: Anticipation Guides and KWL.



#### Anticipation Guides

One of the early pre-reading strategies is the Anticipation Guide developed by H. L. Herber (1978) and used by Buehl (2002). Before students are to read a chapter, story, or article, the teacher prepares a short, 5 to 10 items, list of statements that relate to what is to be read. Students respond to each statement by deciding whether or not they Agree or Disagree with it. Notice that this is not a right or wrong list, but it is designed to bring about discussion within the class or group of students. Neither is the list meant to teach content. Rather the Anticipation Guide is to provoke students' curiosity and stimulate their thinking.

#### Instructions

Here are some brief instructions for non-fiction content:

1. Select five to seven major concepts presented in the material. In your selection, try to find ideas about which students may have false or misguided opinions.
2. Design the statements to be open-ended.
3. Avoid True or False statements.
4. Word the statements to be thought provoking.

# Coaching Update

February 2008  
Volume 2 Issue 6  
Page 5



Here is an example:

Agree	Disagree	
_____	_____	Because of prohibition, criminals and mob bosses gained strength and became a force in America. (Social Studies unit on America in the 1920's)

For a piece of fiction, choose the major themes or moral dilemma the protagonist faces and create the anticipation guide. Here is an example of an Anticipation Guide for fiction:

Agree	Disagree	
_____	_____	Ambition can lead a person to commit crimes, even murder. (Macbeth Anticipation Guide)

Anticipation Guides can be used in small groups as well as on an individual basis. After students finish with the guide, they should individually read the section, chapter, or act. Whenever they find evidence of support or evidence that refutes the statement, the students should mark the page(s) number where they found the evidence. After they finish reading, the students can write short sentences summarizing their findings. Sharing this information leads to class discussion and helps the learners discover what they already know or that they have misinformation that needs correcting.

## **KWL**

Another way to get students involved in learning is Donna Ogle's KWL and KWL + (1986, 2002). This is a guided class brainstorming activity. The teacher uses an overhead projector or SmartBoard for this activity. She/he draws three columns labeling them What I Know, What I Want to Know, and What I Learned.

For example, the teacher asks the students, "What do we know about the heart?" The teacher then records students' answers not correcting students but merely recording what the students think they know. This may stimulate lively class discussion as students are busy correcting misinformation or adding new information to the old. If the teacher thinks this too disruptive, students can work in groups and fill out the group's chart and present it to the class. The next part may best be guided by the teacher as she/he helps the class determine what information might be needed to learn about the heart. Again, the teacher writes down students' answers. Then the students read the selection. The KWL chart should be visible to all as the students read. Then they can write down new information or correct misinformation in the What I Learned column.

## **Extending KWL**

After students complete the KWL chart, the teacher goes over it with the class as a whole. Students can add to their charts as they see a need. Then they are ready to extend the lesson. The + occurs after the columns are completely filled out and students are asked to synthesize

---

---

information about the heart. Students write, either in journals or in essays, a summary of their learning about the heart. They use the charts as pre-writing activities and thus enhance the learning experience. KWL and KWL + are proven pre-reading strategies that all teachers can use and reading teachers particularly can teach their students to use in all content areas.

### Source

Santa, C., Havens, L., & Valdes, B. (2004). *Project Criss: Creating independence through student-owned strategies* (3<sup>rd</sup> ed.). Dubuque, IO: Kendall/Hunt Publishing Company.

---



**Literacy Coaching Clearinghouse**  
<http://www.literacycoachingonline.org>

### CALL FOR LCC TOOLS

Would you like to submit a tool for use by literacy coaches to the Literacy Coaching Clearinghouse (LCC), a joint effort of NCTE and IRA? The LCC is soliciting tools that will be peer-reviewed by members of the LCC Literacy Council for potential publication in the LCC website. Deadlines for submission of tools are February 15, 2009; and May 15, 2009.

LCC Literacy Council hopes to greatly broaden and expand working coaches' voices and participation in the LCC through this effort. The LCC also hopes that researchers will consider publishing observation tools that they have developed. Such tools can be valuable resources for

other research, program evaluation, and development of individual coaching skills.

Tools on all topics related to literacy/reading, instructional coaching are welcomed. Specific examples of tools would be helpful to other coaches are: quality tools used to document one's work as a coach, guides for observation of instruction, rubrics for observing instruction, and so on.

### Submission of a tool should include the following:

- Name of the Tool
- Author, Title and Affiliation
- Audience(s) and School Level(s) designed for
- Purpose of the Tool
- Administration and use of the tool
- Insights gained from the tool
- Attach actual tool. Try over time to have some consistency about the formatting

---

---

## FLCA Area Representatives Email Addresses

Area 1 – Inga Smith  
[ismith@escambia.k12.fl.us](mailto:ismith@escambia.k12.fl.us)

Area 2 – Vicki Gillmore  
[gillmvd@bay.k12.fl.us](mailto:gillmvd@bay.k12.fl.us)

Area 3 – Patricia Rouse  
[rousep@mail.bellevue.leon.k12.fl.us](mailto:rousep@mail.bellevue.leon.k12.fl.us)

Area 4 – Beryl Rogers  
[rogersb@stjohns.k12.fl.us](mailto:rogersb@stjohns.k12.fl.us)

Area 5 – Open

Area 6 – Archer Israel  
[ajisrael@volusia.k12.fl.us](mailto:ajisrael@volusia.k12.fl.us)

Area 7 – Maxine Mangus  
[mangusm@lake.k12.fl.us](mailto:mangusm@lake.k12.fl.us)

Mary Branum  
[fisherp@lake.k12.fl.us](mailto:fisherp@lake.k12.fl.us)

Area 8 – Brian Dorman  
[Brian\\_dorman@scps.k12.fl.us](mailto:Brian_dorman@scps.k12.fl.us)

Diana Triplett  
[tipletd@osceola.k12.fl.us](mailto:tipletd@osceola.k12.fl.us)

Area 9 – Stacie Kagel  
[Stacie.kagel@sdhc.k12.fl.us](mailto:Stacie.kagel@sdhc.k12.fl.us)

Karen Reed  
[reedk@pcsb.org](mailto:reedk@pcsb.org)

Area 10 – Deborah Locandra  
[locandrd@palmbeach.k12.fl.us](mailto:locandrd@palmbeach.k12.fl.us)

Area 11 – Pamela Donehew  
[pameladonehew@yahoo.com](mailto:pameladonehew@yahoo.com)

Areas 12, 13 & 14 – Sandra Perkins  
[sperkins@dadeschools.net](mailto:sperkins@dadeschools.net)



**ATTENTION!!!**

**We Need You!**

Members who are interested in running for FLCA Treasurer or Recording Secretary, please submit a 100-word biography to Heather Henderson, [hhenderv@volusia.k12.fl.us](mailto:hhenderv@volusia.k12.fl.us) by March 31, 2009.